

- COPPER DOMELET, TYP.
- LIMESTONE ARCH, ACCENTS, TYP.
- EXTERIOR WALL ASSEMBLY
 - 1" GYPSUM
 - 2" EXTERIOR POLYMER RENDER
 - 2" RIGID INSULATION BOARD
 - 1/2" STONE CLADDING

- COPPER DOMELET, TYP.
- ROOF ASSEMBLY
 - WOOD TRUSS FRAME
 - 2" RIGID INSULATION BOARD
 - 1/2" GYPSUM
 - COPPER FLASHING AND DOWNSPOUTS

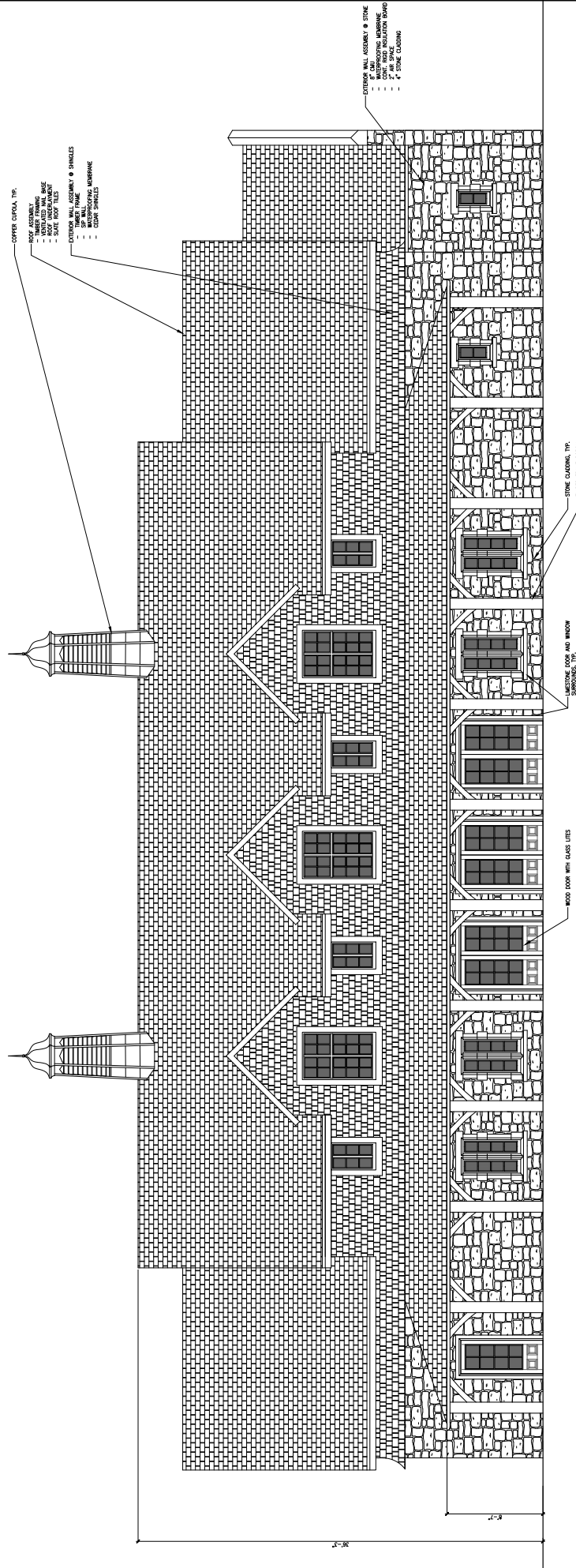
- LIMESTONE DOOR AND WINDOW SURROUNDS, TYP.
- 1/2" POLYURETHANE GLASS LITES AND GLAZING

- LIMESTONE MOSAIC, TYP.

SCALE: 1/4" = 1'-0"
 0 1' 5' 10'
 AUGUST 29, 2024

ST. AELRED CATHOLIC CHURCH
 ACADEMY; EAST ELEVATION - OPTION 1

HARRISON
 DESIGN



ST. AELRED CATHOLIC CHURCH
HALL: NORTH ELEVATION - OPTION 1