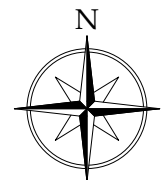
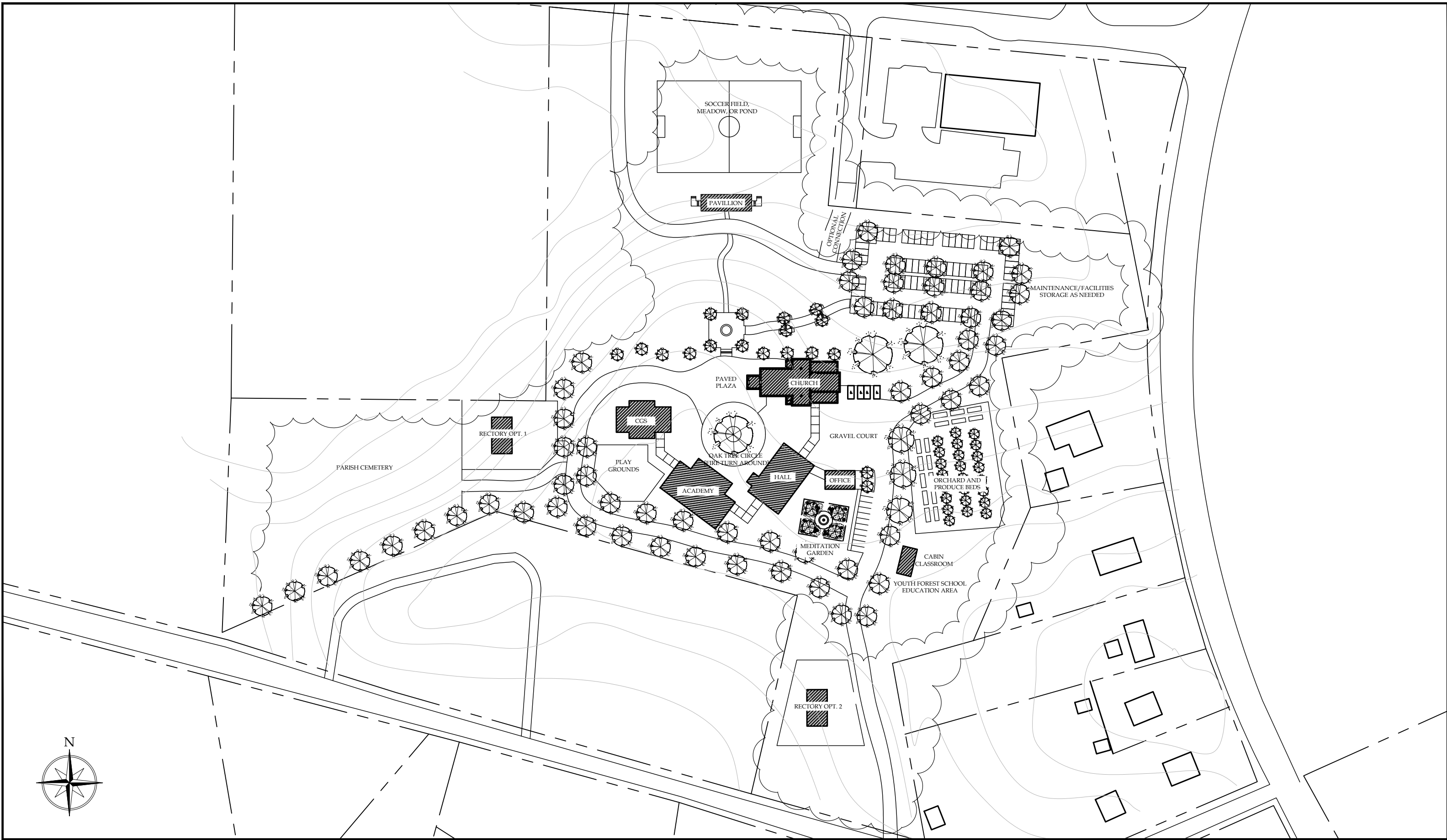


SCALE: 1"=125'  
 0 25' 50' 125'  
 APRIL 30, 2024

# ST. AELRED CATHOLIC CHURCH

SITE PLAN - OPTION 1

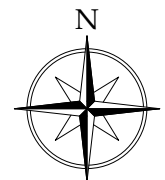
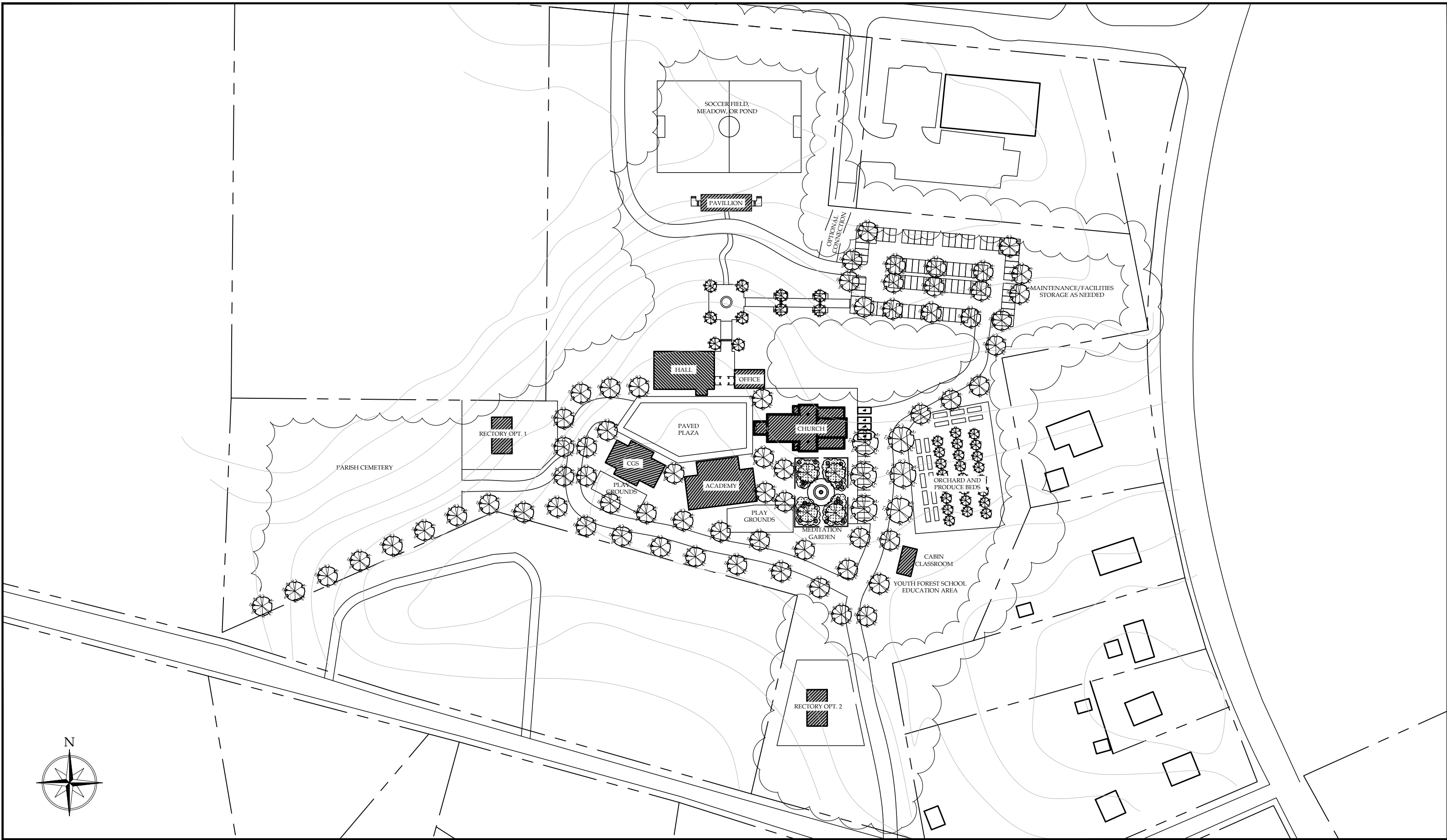
HARRISON  
 DESIGN



SCALE: 1"=125'  
 0 25' 50' 125'  
 APRIL 30, 2024

**ST. AELRED CATHOLIC CHURCH**  
 SITE PLAN - OPTION 2

**HARRISON  
 DESIGN**



SCALE: 1"=125'  
 0 25' 50' 125'  
 APRIL 30, 2024

# ST. AELRED CATHOLIC CHURCH

SITE PLAN - OPTION 3

HARRISON  
 DESIGN

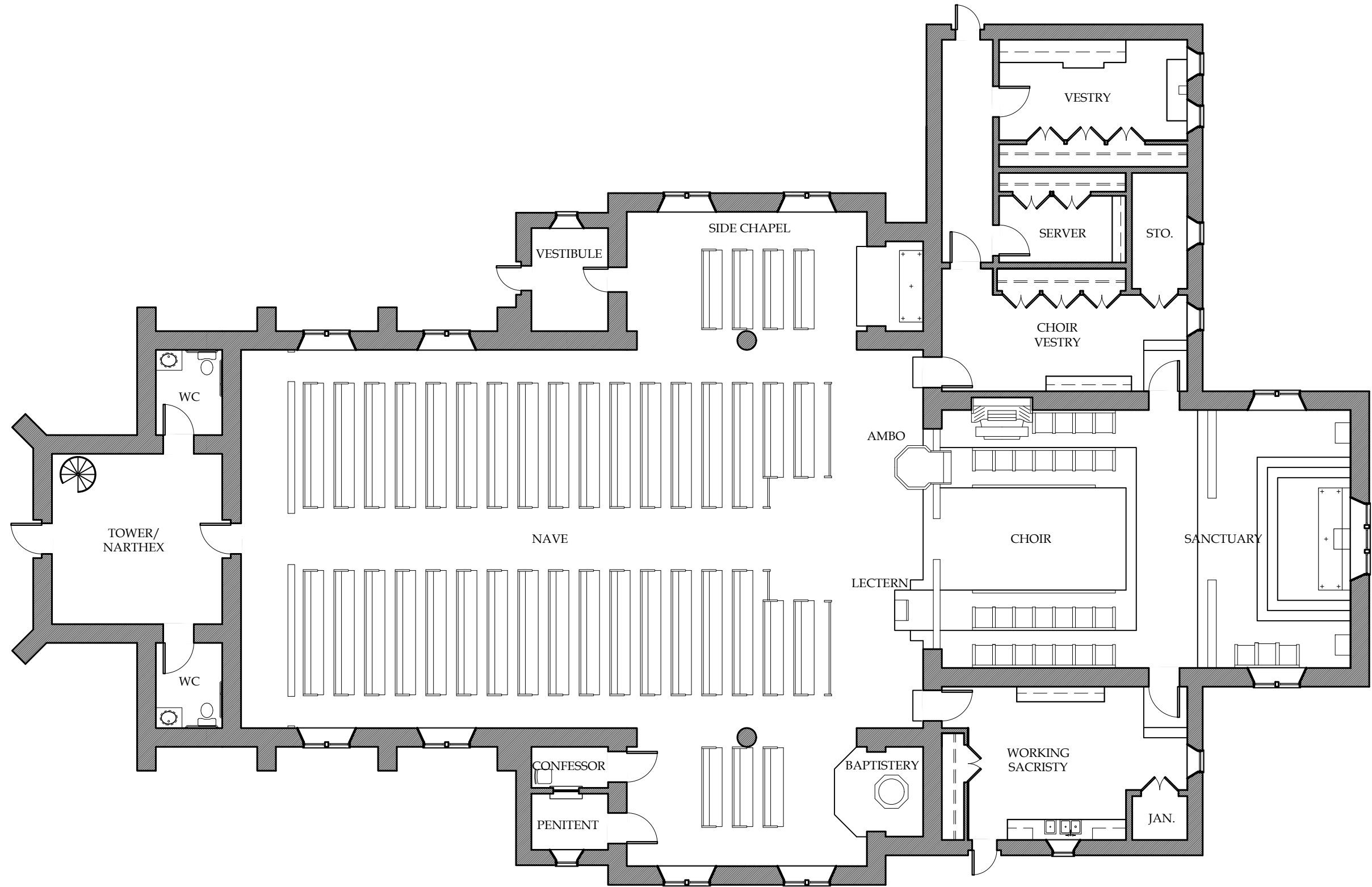


SEATS IN NAVE: 184  
 SEATS IN TRANSEPTS: 35  
 TOTAL PEW SEATING: 219  
 AREA: 6,070 SF

SCALE: 3/32" = 1'-0"  
 0' 5' 10'  
 APRIL 30, 2024

ST. AELRED CATHOLIC CHURCH - BISHOP, GA  
 CHURCH FLOOR PLAN OPTION A - PHASE I

HARRISON  
 DESIGN

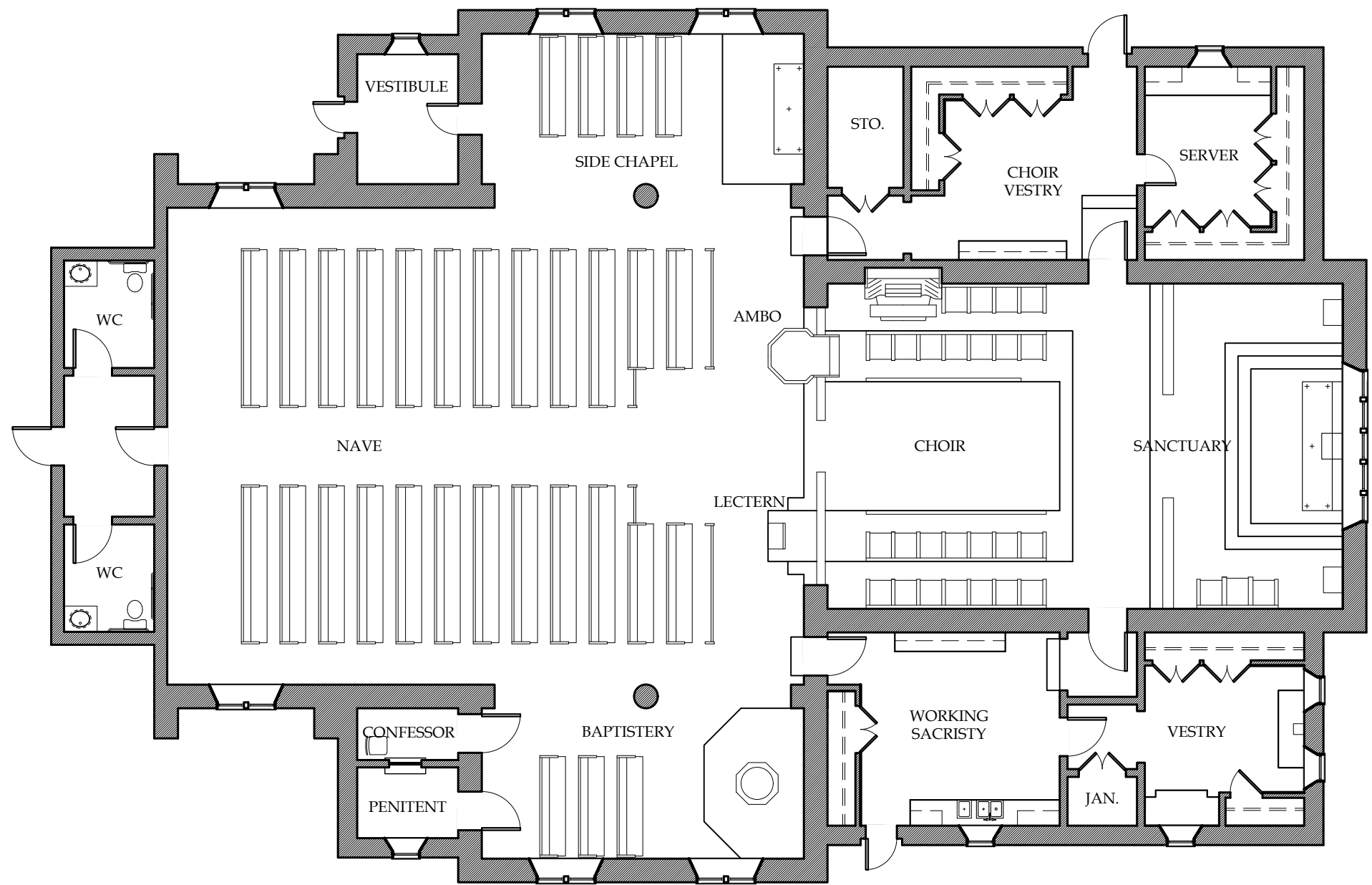


SEATS IN NAVE: 264  
 SEATS IN TRANSEPTS: 35  
 TOTAL PEW SEATING: 299  
 AREA: 7,040 SF

SCALE: 3/32" = 1'-0"  
 0' 5' 10'  
 APRIL 30, 2024

ST. AELRED CATHOLIC CHURCH - BISHOP, GA  
 CHURCH FLOOR PLAN OPTION A- PHASE II

HARRISON  
 DESIGN

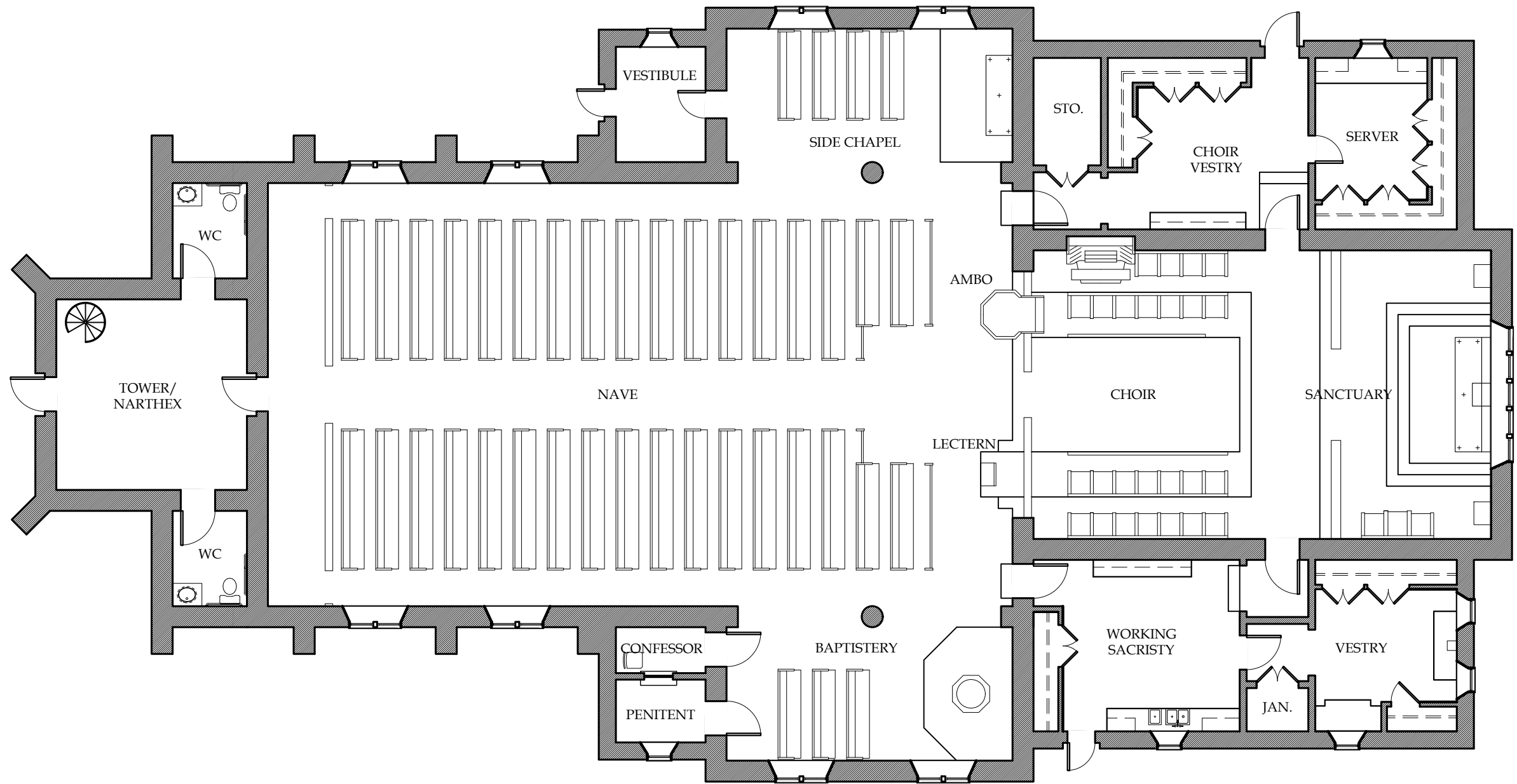


SEATS IN NAVE: 184  
 SEATS IN TRANSEPTS: 35  
 TOTAL PEW SEATING: 219  
 AREA: 5,840 SF

SCALE: 3/32" = 1'-0"  
 0' 5' 10'  
 APRIL 30, 2024

ST. AELRED CATHOLIC CHURCH - BISHOP, GA  
 CHURCH FLOOR PLAN OPTION B - PHASE I

HARRISON  
 DESIGN

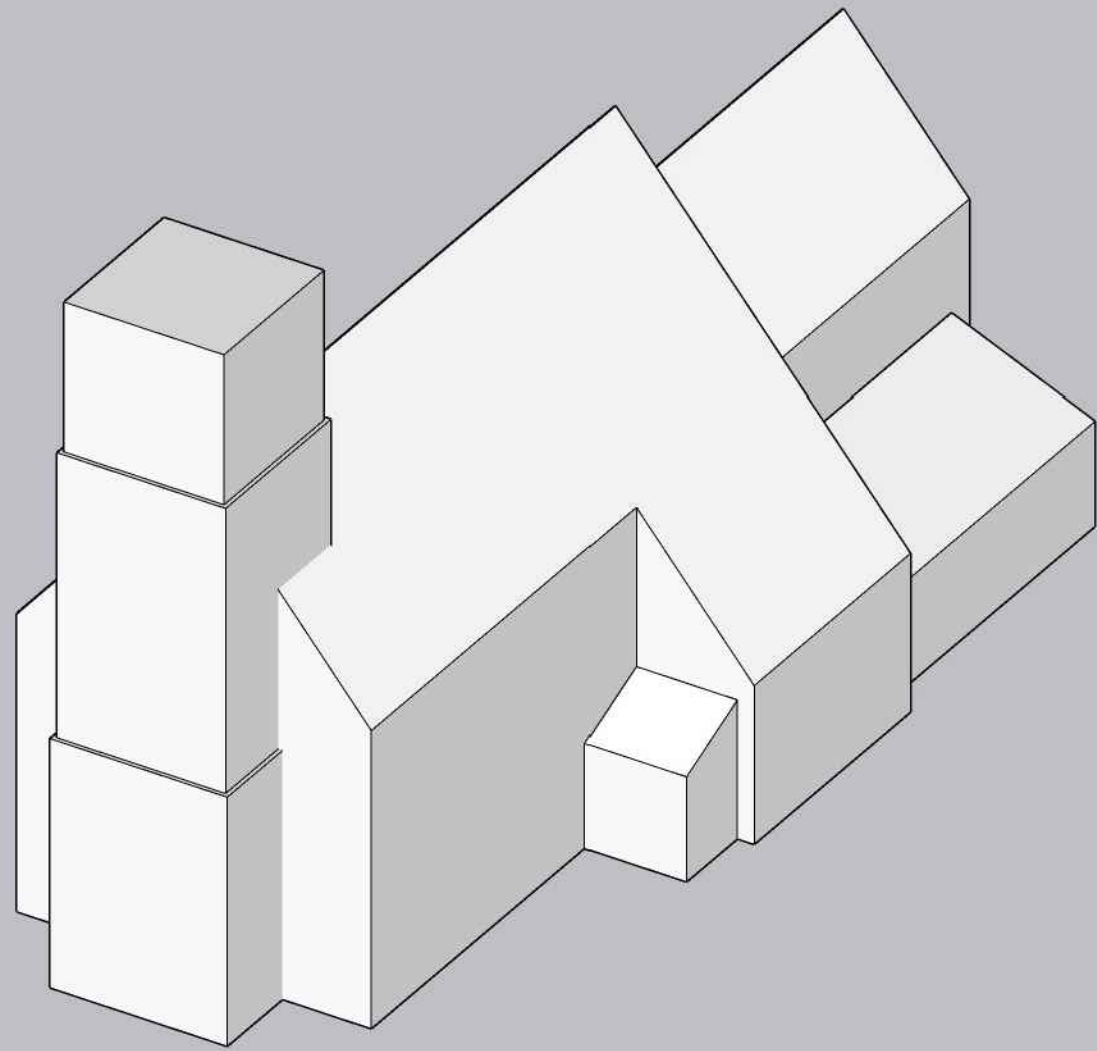


SEATS IN NAVE: 264  
 SEATS IN TRANSEPTS: 35  
 TOTAL PEW SEATING: 299  
 AREA: 6,810 SF

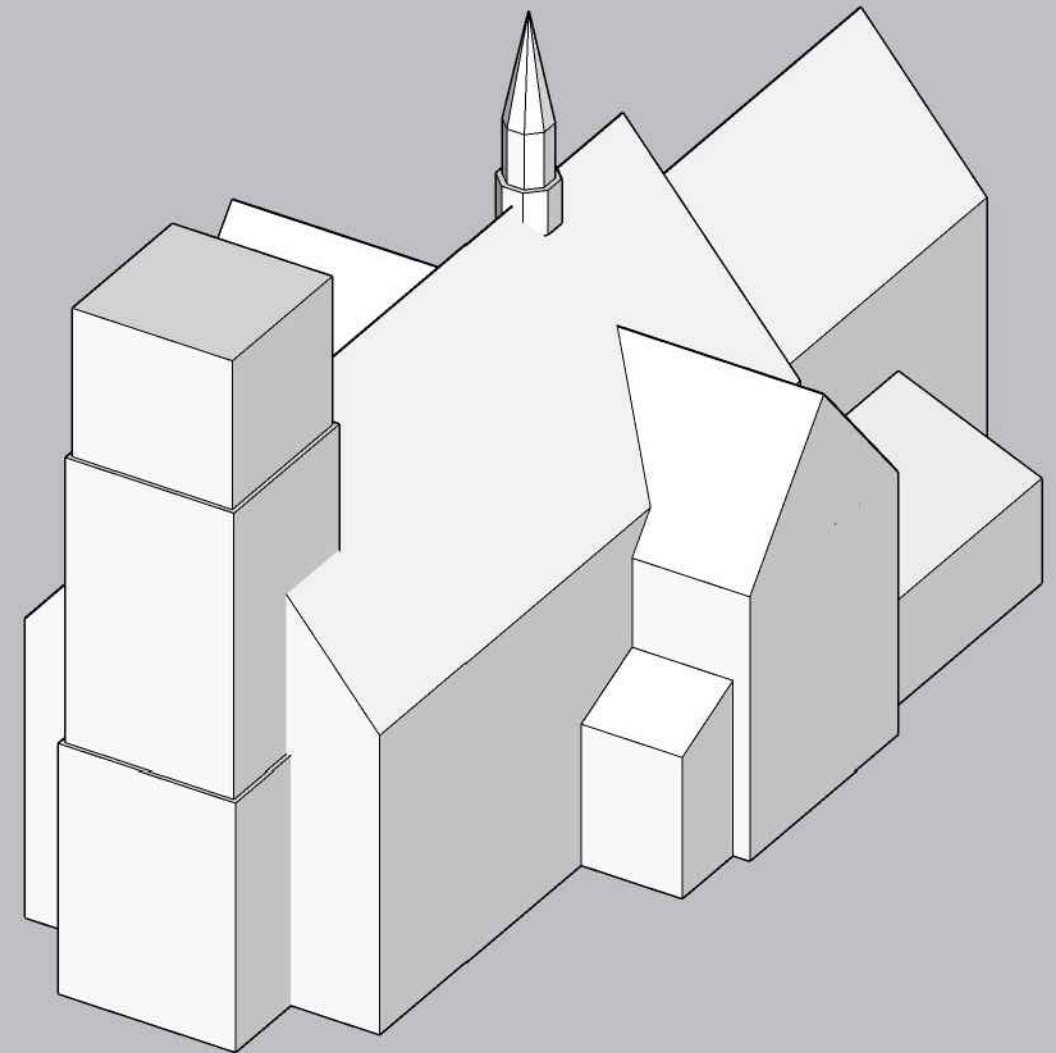
SCALE: 3/32" = 1'-0"  
 0' 5' 10'  
 APRIL 30, 2024

ST. AELRED CATHOLIC CHURCH - BISHOP, GA  
 CHURCH FLOOR PLAN OPTION B - PHASE II

HARRISON  
 DESIGN



OPTION B



OPTION A

NOT TO SCALE

APRIL 30, 2024

# ST. AELRED CATHOLIC CHURCH - BISHOP, GA

MASSING OPTIONS

HARRISON  
DESIGN